

JT26

BULLDOZER
SERIES

ENGINE MODEL	WEICHAIWP12G280E304
GROSS POWER	195kW(265hp)@1900rpm
OPERATING WEIGHT	23450KG

LET'S MAKE
CONSTRUCTION EASIER



JT26 TECHNICAL PARAMETERS BULLDOZER SERIES

ENGINE	JT26/W	JT26C	JT26F	JT26D/E	JT26S	JT26R
Engine	WEICHAI WP126280E304					
Emission	China-II					
Rated revolution	1900rpm					
Gross power	195kW(265hp)@1900rpm					
Net power	192kW(260hp)@1900rpm					
Number of cylinder-borexstroke	6-140X152mm					
Displacement	14.01L					
Max. torque	1080N.m@1300rpm					
Cooling system	Mechanic fan					
DRIVE SYSTEM	JT26/W	JT26C	JT26F	JT26D/E	JT26S	JT26R
Drive system	Manufactured by SHANTUI, with high working efficiency, low breakdown rate; torqflow transmission, 3 gears forward and 3 gears backward.					
Traveling Forward	F1:3.6km/h R2:6.5km/h F3:11.2km/h					
speed Backward	R1:4.3km/h R2:7.7km/h R3:13.2km/h					
Max theoretica traction force	450kN					
Torque converter	3-element, single stage, 1-phase					
Transmission	Planetary gear and torqflow transmission hydraulically actuated, forced lubrication					
Central drive	Spiral bevel gear, single-stage speed reduction, splash lubrication					
Steering clutch	Wet multiple disc, disc spring loaded, hydraulically actuated, hand operated, interconnected with steering brake.					
Brake clutch	Wet, contracting band, foot operated with hydraulic booster					
Final drive	Spur gear, double reduction, splash lubrication					
CHASSIS SYSTEM	JT26/W	JT26C	JT26F	JT26D/E	JT26S	JT26R
Type	Swing type of sprayed beam, suspended structure of equalizer bar					
Track shoe type	Single grouser			Wetland type		
Track gauge	2000mm					
Width of track shoe	560/610 660mm	660mm	610/ 660mm	560/610 /660mm	910mm	
Track grounding length	2430mm			3050mm	3480mm	
Track grounding area	28727cm ²	40935cm ²	38317cm ²		71476cm ²	
Number of track shoe	38pcs/side			41pes/side45pcs/side		
Grounding pressure (standard configuration)	66kPa	57.5kPa	64kPa	66kPa	36kPa	35.2kPa
Number of carrier roller	2pcs/side					
Number of track roller	6pcs/side			7pes/side 8pcs/side		
Pitch	206mm					
回 VOLUME	JT26/W	JT26C	JT26F	JT26D/E	JT26S	JT26R
Fuel capacity	450L					
Coolant liquid capacity	79L					
Engine oil capacity	45L					
Transmission	122L					
Drive axle	110L					
Final drive	82L/side			102L/side		
OPERATING WEIGHT	JT26/W	JT26C	JT26F	JT26R		
Operating weight (standard)	23450kg	24000kg	24700kg	24600kg	26000kg	
BLADE	JT26/W	JT26C	JT26F			
Blade type	Coal-U	Straigh-it/Anglel/Semi-U/U			Straight til	Waste hand
Blade capacity	8m ³	4.6/3.4/5.8/6.7m ³			5.2m ³	11.8m ³

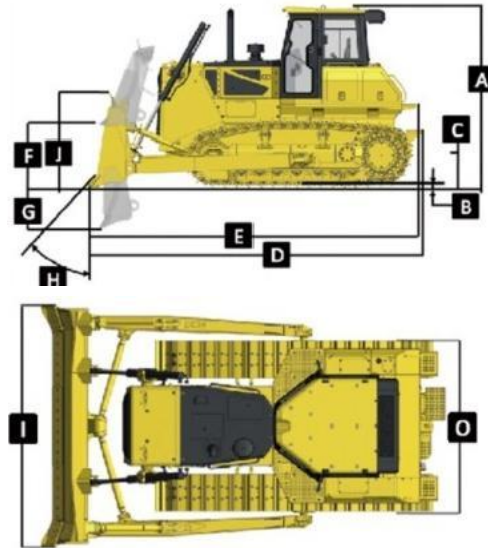
DIMENSION	JT26/W	JT26C	JT26F	JT26D/E	JT26S	JT26R
A Machine height (without ROPS)	3402mm					
B Track grouser height	72mm				123mm wefiand type	
C Ground clearance	405mm				513mm	
D Machine length (without draw bar)	6027mm	5462mm		5712mm	6257mm	
E Machine length (with draw bar)	6060mm	5495mm		6290mm		
F Max. lifting height of blade	1210mm				1330mm	
G Max. digging depth of blade	540mm				550mm	
H Digging angle of blade	55° ±3(deg.)					
I Blade width	4200mm	3725/4365/3800/3725mm			4365mm	
J Blade height	1350mm	1315/1055/1343/1374mm	1248mm		1885mm	

Width from end of left

0 track shoe to end of

(standard)

3800mm



思 PARAMETER OF RIPPER		
Type	Three-shank ripper	Single shank ripper
Weight	2600kg	2450kg
Q Max. ripping depth	666mm	695mm
R Max. lifting height	555mm	515mm
S Ripper length (at deepest ripping)	1781mm	1974mm
T Ripper width	2158mm	1426mm
U Departure angle (at highest lifting)	25.5°	25.5°
V Ripping width	2000mm	2000mm/106mm

W Distance between ripper teeth 930mm

